

Poki Station makes you feel like snapping off.

OLFA[®]
THE ORIGINATOR SINCE 1956

PATENT PENDING

POKI STATION



NEW

Snapping-off turns to  a certain type of amusement!

Complete Desktop Blade Disposal System

**Don't be afraid...
Snap it off easily with the new snap-off system!**

Easily snap off with a minimum pressure/movement. Just insert a stainless sheath with one segment exposed and press the lever. Snapping-off takes place inside the container; the fear of snapping-off is reduced and used blade segments are not scattered.

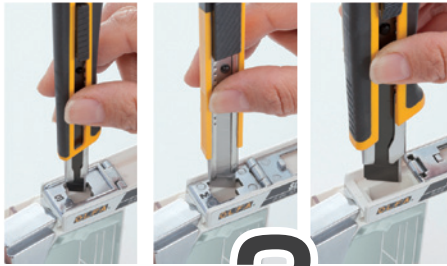


Accommodates from the sharp angle SAC-1 to heavy-duty models.

Complete Desktop Blade Disposal System

Observe through the front window.

PATENT PENDING

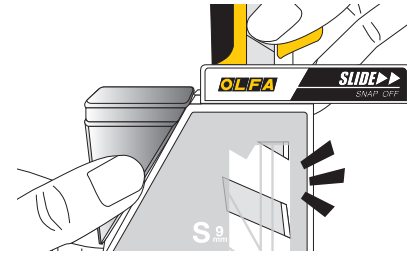


1 Choose a guide which fits the size of blade from **3** guides.

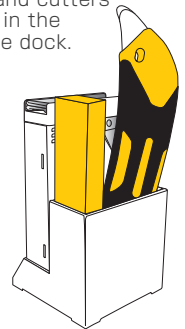


*Cutters and blades are sold separately.

2 See where the cutter is and confirm what is going on inside through the front window.



3 Poki Station can be an organizer as spare blades and cutters can be stored in the backside of the dock.



4 Can be used as a portable blade disposal case, as well as used on a desk by using the dock.

S 9 mm	9 mm	
AB ABB SAB DKB		
M 12.5 mm	12.5 mm	
MTB FWB		
L 18 mm	18 mm	
LB LBB		

How to snap off under lock and key, and lightly.

<p>Pull out the upper part to open the blade position. Lever turns up accordingly.</p>	<p>Choose one right guide which fits the size of your cutter.</p> <p>For the "180 Black" use guide "M".</p>	<p>Expose 1 segment only and navigate it deep into the blade position.</p> <p>Break line</p> <p>1 segment</p> <p>Always have break line side facing to the front window.</p>	<p>Fix the cutter, and press the lever until you hear the sound "snap" from inside.</p> <p>Snap</p> <p>*After using, slide the top part back in while pressing the lever.</p> <p>*Make sure one segment is exposed BEFORE inserting, and inserted deep enough.</p>	<p>After using, slide the top part back in while pressing the lever.</p> <p>Open the lid on the backside and dispose used segments in bulk. Do not let the container overflow.</p>
--	---	--	--	--

DC-6 does not accommodate all the 25mm cutters and some of the 18mm and 9mm below:

SPC-1 • ES-1/green • PA-2 • PL-1 • CMP-2 • OL • KL • CL • LL • SL-1 • ML

WARNING

1. OLFA BLADES are extremely sharp! Handle with care.
2. Keep out of the reach of children.
3. See the instruction manual for details.
4. Does not accommodate discontinued models and non-OLFA snap-off cutters/blades.
5. Do not overfill the container. The square-shaped container contains up to 15 x LB blades, 25 x MB blades, or 50 x AB blades.

URL <http://www.olfa.com>

OLFA[®]
THE ORIGINATOR SINCE 1956

MANUFACTURED BY OLFA CORPORATION, OSAKA 537-0021, JAPAN

Entire contents copyright OLFA CORPORATION All rights reserved.

2013 APRIL