

**SK-16**  
**SKB-16/10**

**SAFETY**  
**FIRST**

FOR BOTH  
RIGHT- and LEFT  
HANDED USERS

STAINLESS  
STEEL  
BLADE

**PAT.**

MODEL	SK-16	DATE	July, 2021
PACKAGE	Blister packed	CARD SIZE	W95 x H220mm
BARCODE	0 91511 23038 3	0 91511 23038 3	
INNER BOX	6 pcs. 100 91511 23038 0	100 91511 23038 0	
CARTON	120 pcs. 500 91511 23038 8	500 91511 23038 8	

MODEL	SKB-16/10 (10-blade pack)	DATE	July, 2021
PACKAGE	Paper box	PACKAGE SIZE	W74 x H205 x D49
BARCODE	0 91511 23039 0	0 91511 23039 0	
INNER BOX	6 pcs. 100 91511 23039 7	100 91511 23039 7	
CARTON	60 pcs. 500 91511 23039 5	500 91511 23039 5	



**DESIGN OBJECTIVE**

Unpacking is a process performed in many industries and every household.

Workplace safety has become a serious business concern in recent years. A business is expected to ensure the safety of its employees, therefore an accident can cause a business serious damage.



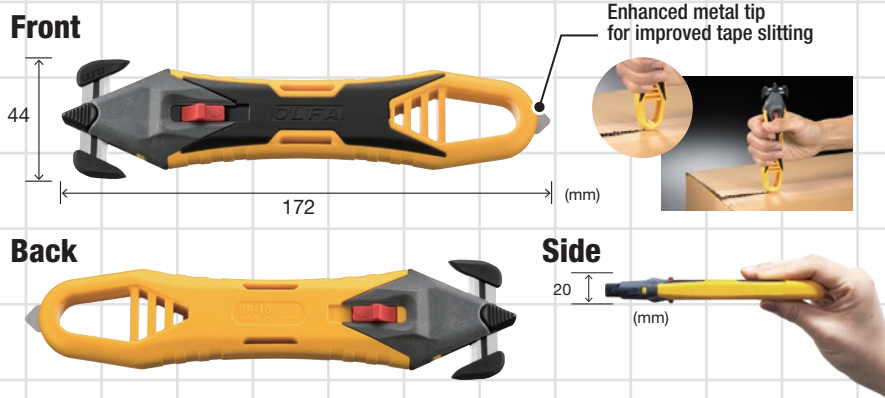
**TARGET MARKET & MARKET TRENDS**

Concealed Blade Cutters are attracting attention for their high level of safety.

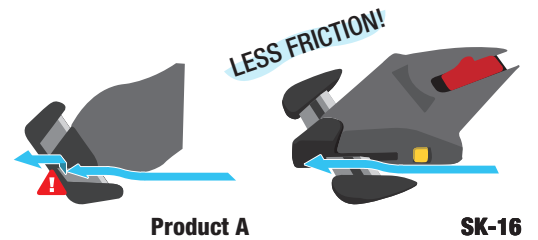
Many competitor products are in this field as well. OLFA have been focusing on safety cutters such as SK-10 and SK-15. We are keeping up with market trends and will enforce the safety series.



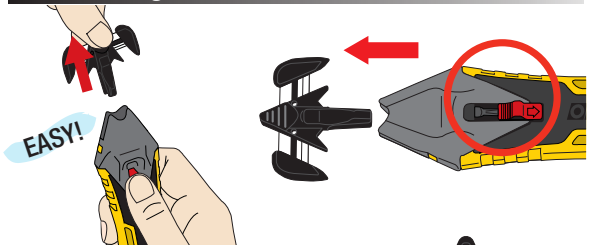
**FEATURES**



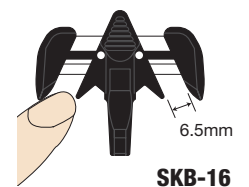
Minimum cut resistance with our unique design



How to change the blade



Blade release can be easily activated from either side of the handle. SKB-16 keeps the blade exposure the same as when loaded, adding to the level of safety.



**Cutting Materials**

Having one "SK-16" around can cover a wide range of unpacking tasks!

