

# OLFA®

**L-6**  
Wheel Lock

WHEEL  
LOCK

**L6-AL**  
Automatic  
Blade Lock

AUTO  
LOCK

**Large Lanyard Hole serves for the lesser as well.**  
X-designed fiberglass rubber grip for simple and firm grasping. Acetone resistant.  
Safety lanyard can be easily attached for safety management.

**DESIGN series**  
with **Large Lanyard Hole**

COMFORT  
GRIP™

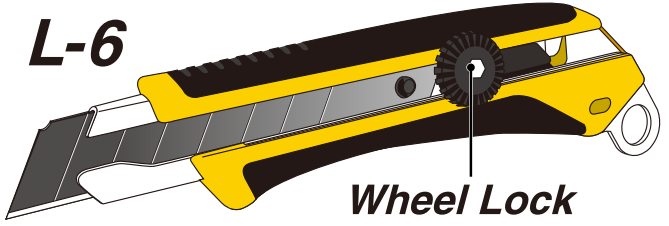
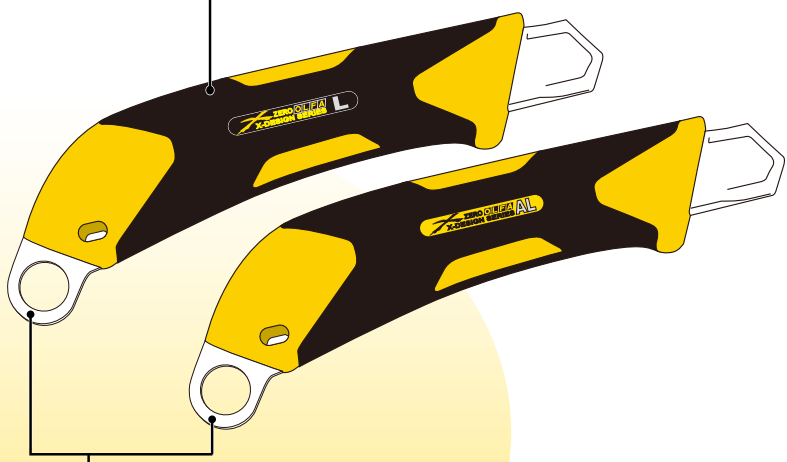
ACETONE  
RESISTANT

Large-sized  
metal fittings  
are attachable!

# L-6, L6-AL

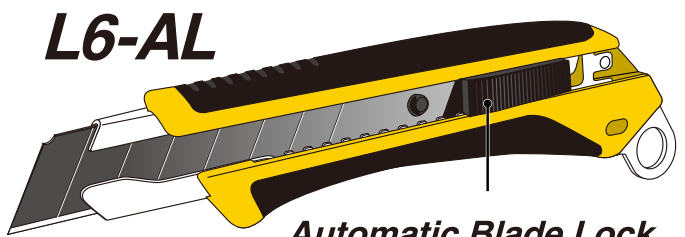
Featuring the anti-slip rubber grip, the OLFA X-design heavy-duty cutters come with a lanyard hole. The L-6 and L6-AL are best suited to use at overhead locations.

**X-DESIGN** Anti-slip conjoined with glass-fibered resin and elastomer is for maximum handling and control.



**L-6**  
**Wheel Lock**

Wheel Blade Lock for unlimited blade positioning and restraining rattling of blade edge.



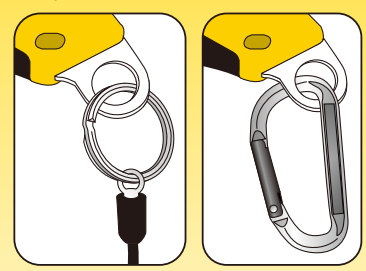
**L6-AL**  
**Automatic Blade Lock**

Easy handling Auto Lock for maximum comfort and control. Strong blade lock enhances working efficiency.

## Safety Lanyard Hole

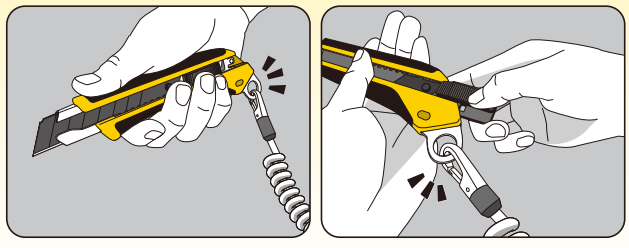


12mm-diameter lanyard hole is easy to handle, fits most lanyards.

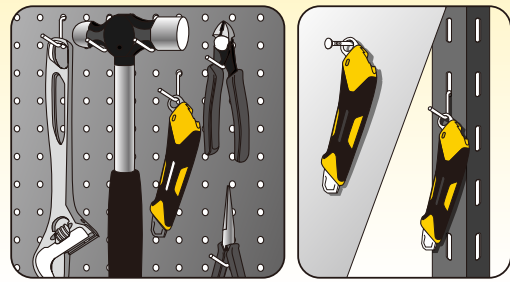


**!** Differently from the L-5, the lanyard hole part cannot be used as a pick for opening cans.







The lanyard hole, as well as a lanyard, does not get in the way of work operation or blade replacement.



Being convenient for wall hanging storage also helps safety management.



**!** "Safety Lanyard" is not included in the package. The picture of a lanyard shown on the package is just for the purpose of reference. **!**

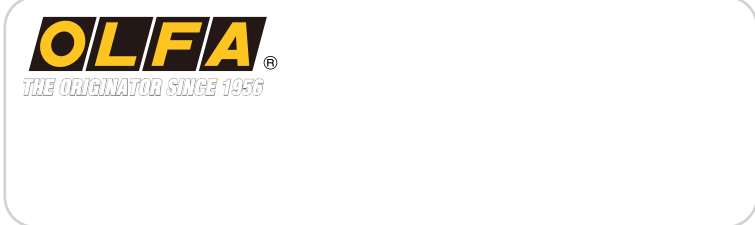
MODEL	PACKAGE	BARCODE		INNER BOX		CARTON
<b>L-6</b>	<b>Blister Packed</b> CARD SIZE: 95x220mm	 0 91511 22003 2	<b>6</b> pcs.	 100 91511 22003 9	<b>120</b> pcs.	 500 91511 22003 7
<b>L6-AL</b>	<b>Blister Packed</b> CARD SIZE: 95x220mm	 0 91511 22004 9	<b>6</b> pcs.	 100 91511 22004 6	<b>120</b> pcs.	 500 91511 22004 4

**!** **WARNING** **!**

1. Blade extremely sharp. Handle with care.
2. Wear safety goggles and gloves.
3. Keep out of the reach of children.

URL <http://www.olfa.com>

MANUFACTURED BY **OLFA CORPORATION** OSAKA 537-0021, JAPAN



PRINTED IN JAPAN