

OLFA[®]
THE ORIGINATOR SINCE 1956

Full-Fledged Tothing & Impulse Hardening

HSW-1

25 mm SAW BLADE

The full-fledged tothing delivers the ultimate combination of extra-toughness and extra-sharpness. Intensified degree of hardness generated by "Impulse Hardening" process creates an important point of difference.



General-purpose HSW-1 cuts wood, plastic and more.

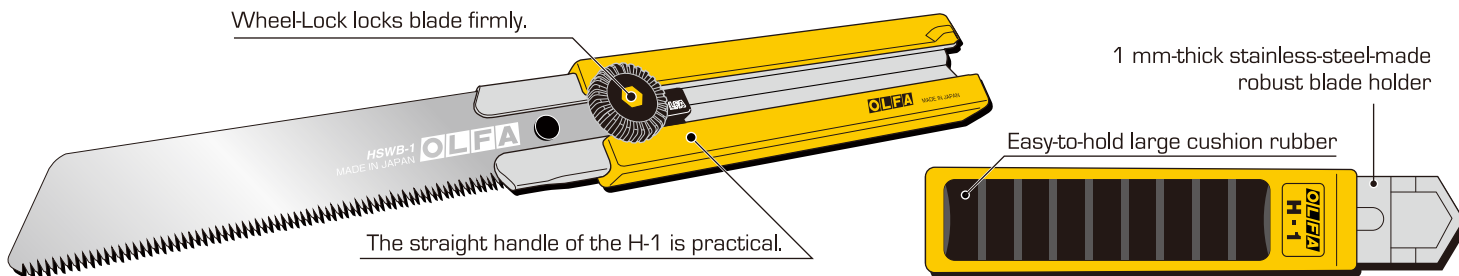
The HSW-1, just like an OLFA snap-off blade cutter, is pocket-sized while not in use.



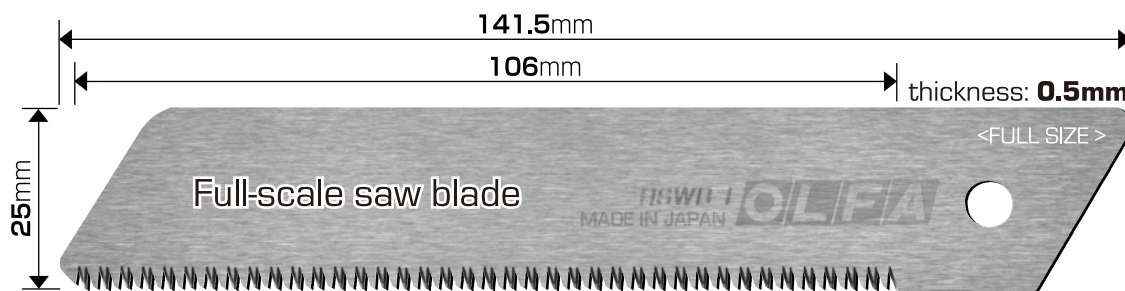
OLFA took a blade retractable/replaceable saw to the next level, bringing long-established features of the OLFA cutters into play.

HSW-1

The exceptional HSW-1 features the full-fledged toothing blade HSWB-1, which delivers the pull-saw's fast & light cutting feature. The H-1's handle, which OLFA adopted for the new 25 mm saw, features most suitable handle shape which fits perfectly for the new 25mm saw blade for various usages.



HSWB-1 "Full-Fledged Toothing for fast & light cutting"



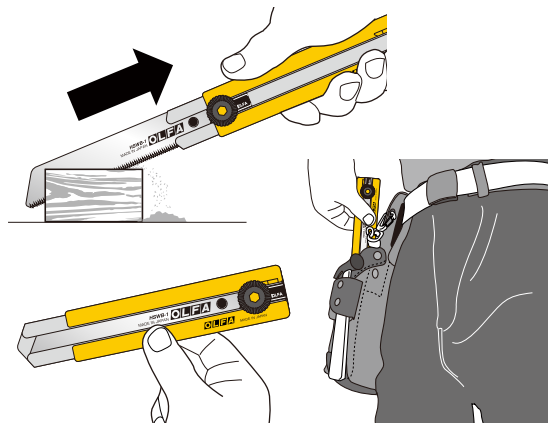
- Impulse Hardening Process for longer blade's life
- Electroless Nickel Plating for anti-rusting

Compact when carried about, with full-fledged usability.

It's what you need to know. – Do not take it for granted!

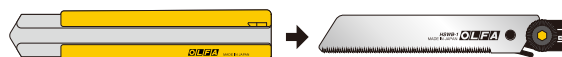
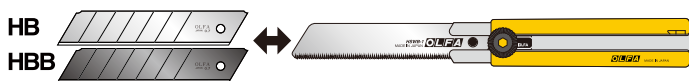
Using a saw, here we mean a "Push-Saw", generally may make users associate with heavy physical work. At the same time, **the HSW-1 is a "Pull-Saw"**. A pull-saw, usually features a relatively thin blade, lets a user cut light; A thin blade generates less friction while cutting. The HSW-1 delivers the level of sharpness which a user cannot expect from its compact-looking.

Users will discover more about the logic in 5 minutes of use.



HSW-1 can load the OLFA 25 mm snap-off blades.

How to replace a blade



▶ The HSWB-1 fits other OLFA extra heavy-duty cutters as well.

MODEL	PACKAGE	BARCODE	INNER BOX	CARTON
HSW-1	Blister Packed CARD SIZE : 92 x 228.5 mm	9 1511 61057 4	200 91511 61057 8	600 91511 61057 6
HSWB-1/1B	Blister Packed CARD SIZE : 80 x 220 mm	9 1511 61058 1	200 91511 61058 5	600 91511 61058 3
			6 pcs.	72 pcs.[6x12]
			6 pcs.	120 pcs.[6x20]

WARNING

1. OLFA BLADES are extremely sharp! Handle with care.
2. Dispose of used blade in a safe manner.
3. Wear safety goggles.
4. Keep out of the reach of children.

URL <http://www.olfa.com>

MANUFACTURED BY OLFA CORPORATION, OSAKA 537-0021, JAPAN

OLFA
THE ORIGINATOR SINCE 1956

PRINTED IN JAPAN 2011 DECEMBER - DS